

Health and Safety Update

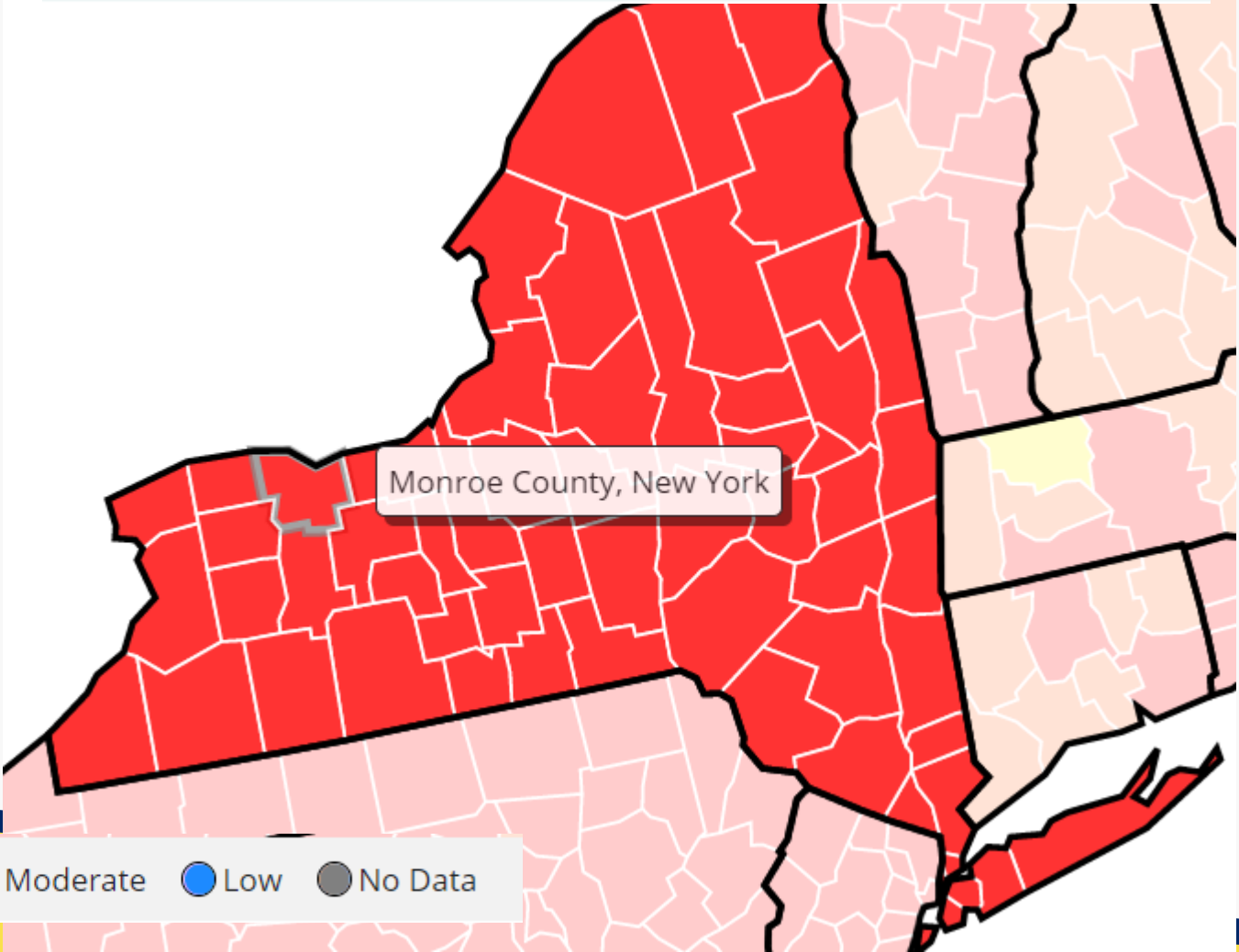
September 7, 2021

Spencerport Central School District



Current State of COVID-19

Time Period: Tue Aug 31 2021 - Mon Sep 06 2021



● High ● Substantial ● Moderate ● Low ● No Data



Source: <https://covid.cdc.gov/covid-data-tracker/#county-view>

Testing data as of: 9/6/2021
Testing data last updated on: 9/7/2021

Test Results - Yesterday

		Total Persons Tested	Total Tested Positive	% Positive, Yesterday	% Positive, 7-day Avg
Finger Lakes	Genesee	167	10	6.0%	4.2%
	Livingston	168	13	7.7%	7.3%
	Monroe	2,045	111	5.4%	4.0%
	Ontario	292	19	6.5%	4.2%
	Orleans	71	3	4.2%	7.6%
	Seneca	56	11	19.6%	7.1%
	Wayne	260	24	9.2%	4.7%
	Wyoming	64	3	4.7%	3.7%
	Yates	128	9	7.0%	6.8%

Source: <https://forward.ny.gov/percentage-positive-results-region-dashboard>





Monroe County, NY, COVID-19 Dashboard



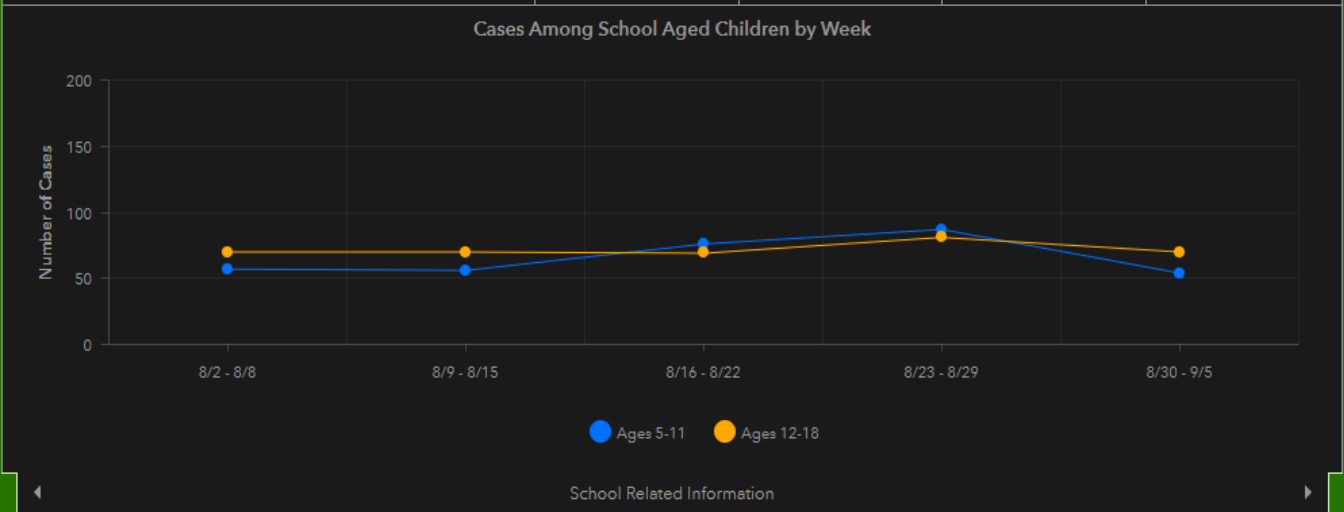
Navigate through the individual graphs using the arrows or tabs below (navigation type is dependent on the resolution of your computer screen). You can also expand this window by clicking on the upper right corner of the graph.

Click to view the COVID-19 Surveillance Report, courtesy of the Rochester Emerging Infections Program, Center for Community Health and Prevention at URM.

Community Transmission Levels, Monroe County. Last updated: 9/6/2021	CDC COVID Tracker https://covid.cdc.gov/covid-data-tracker/#county-view	Last Updated: 8/26/2021 % of Youth Age 12-18 with Vaccine Series Complete
Case rate per/100K last 7 days Time period: Thu Aug 26 2021 - Wed Sep 01 2021	164.34	47.4%
Percent Positivity Rate (NAATs)* Time Period: Sun Aug 20 2021 - Sat Aug 26 2021	6.09%	

*These data represent results from NAATs (Nucleic Acid Amplification Tests (NAATs), which look at genetic material for COVID-19. PCR tests are one form of NAATs. Antigen tests (which are often used for asymptomatic screening) and antibody tests are not counted. Test results are from US laboratories and do not include results from all testing sites in a jurisdiction (e.g., point-of-care test sites are usually not included).

CDC Guidelines for Community Level of Transmission	Low	Moderate	Substantial	High
Total New Cases per 100,000 Persons in Past 7 Days	0 - 9.99	10 - 49.99	50 - 99.99	>= 100
Percentage of NAATs that are Positive During the Past 7 Days	0 - 4.99%	5 - 7.99%	8 - 9.99%	>= 10%



Except for the hospitalization data, the Monroe County COVID-19 Dashboard reports data for Monroe County only and not the nine county Finger Lakes region.

Monroe County Specific data, last updated 9/7/2021 3:55 PM (updated weekdays)

New COVID-19 Positive Cases

72

Definition: New COVID-19 positive cases reported to Monroe County Department of Public Health MCDPH yesterday. Does not include cases where the MCDPH determined that the case did not reside in Monroe County. Counts may include college students who go to school in another county, tested positive and came home to Monroe County to isolate. May also include college students who live in other counties but are

7 Day Average of New COVID-19 Positive Cases

161

Definition: 7 day average of new COVID-19 positive cases

% of COVID Tests that were Positive (7 day average)

4.1%

Definition: Number of positive tests divided by total tests based on report date.

Monroe County Specific data, last updated 9/7/2021 3:55 PM (updated weekly on Mondays)

Total Confirmed Cases Reported

73,201

Definition: Total cases reported to MCDPH since March. Note that total cases will not include cases reported to other health departments.

Deaths

1,379

Definition: Death certificate lists COVID as the cause of death. Include Monroe County only.

Monroe County - Residents who Received COVID-19 Vaccine last updated 9/7/2021 3:55 PM <https://covid19vaccine.health.ny.gov/covid-19-vaccine-tracker>

People with Completed Vaccine Series (updated weekly on Mondays)

453,073

Definition: Residents who have completed the recommended series of a given COVID-19 vaccine.

Percent of Population with Completed Vaccine Series (updated weekly on Mondays)

61%

Definition: % of people who have completed the recommended series of a given COVID-19 vaccine.

People with at Least 1 Vaccine Dose (updated weekly on Mondays)

484,419

Definition: Residents who have at least one vaccine dose.

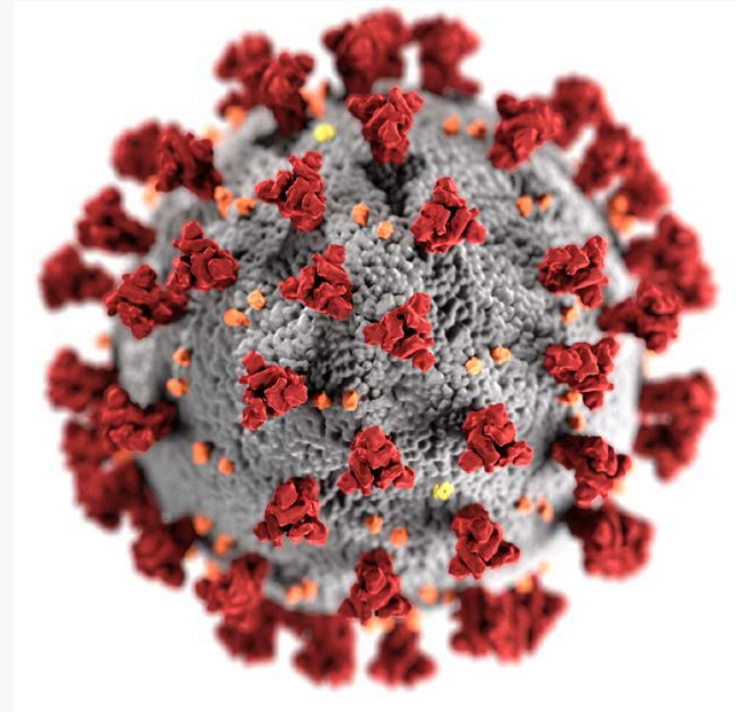
Percent of Population with at Least 1 Vaccine Dose (updated weekly on Mondays)

65.2%

Definition: # of people with at least one vaccine dose divided by the total population.

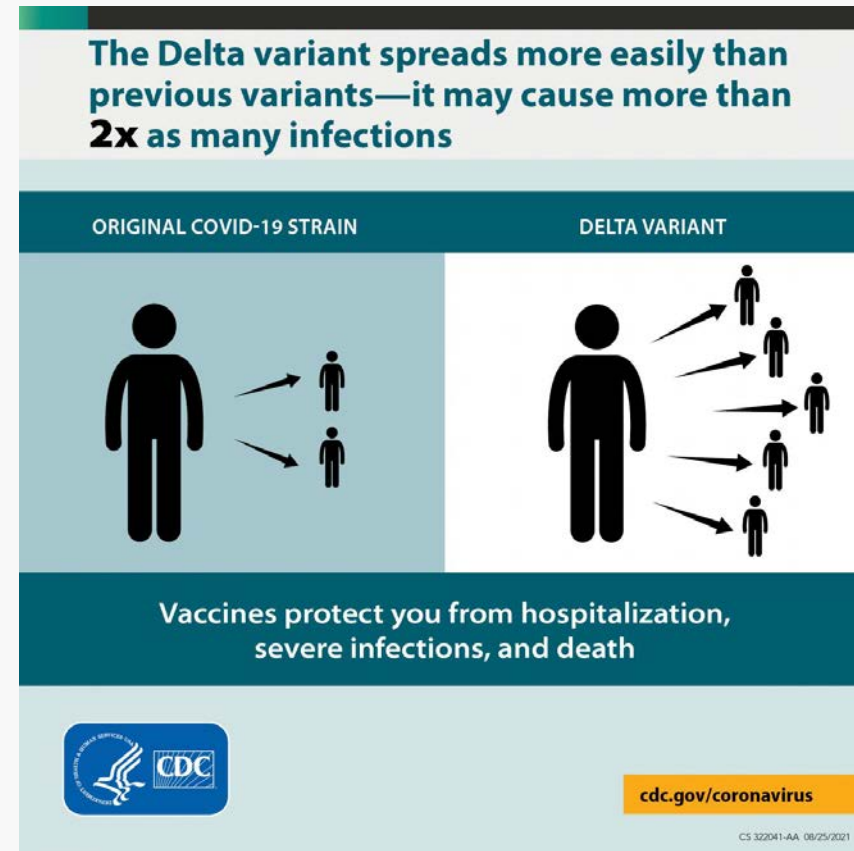
What are variants?

- Viruses constantly mutate → variants
- Classified based on level of concern for effective treatments, severity of illness and transmissibility
 - *Variants of no interest*
 - Variants of Interest (VOI)
 - **Variants of Concern (VOC)**
 - Variants of High Consequence



What we know about the Delta variant

- More than 2x as contagious as previous variants
- May cause more severe illness than previous strains in the unvaccinated
- Unvaccinated people remain greatest concern
- Fully vaccinated individuals can spread the virus, though may be infectious for a shorter period



Layered Mitigation Strategies



- ✓ Vaccinations
- ✓ Masking
- ✓ Physical Distancing
- ✓ Testing
- ✓ Ventilation
- ✓ Handwashing and respiratory etiquette
- ✓ Contact tracing, isolation, and quarantine
- ✓ Cleaning and disinfecting

COVID Vaccines

- Vaccination rates vary from community to community, district to district –keep in mind students and staff cross district lines
- Eligible students ages 12-18
 - 58.9% at least one dose
 - 50.5% completed series
- Vaccines for children ages 5-11 expected late Fall/early winter



Masking

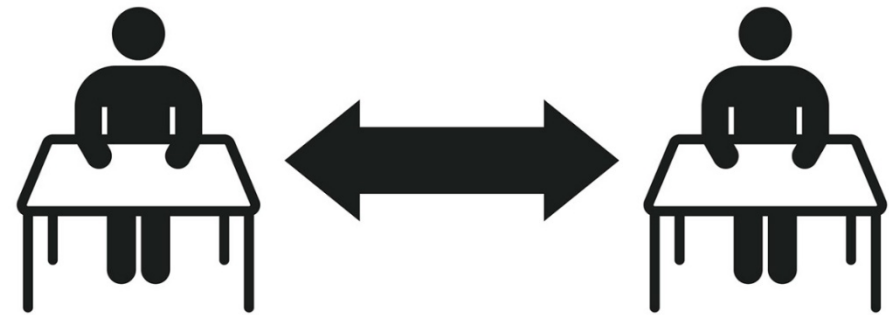
- All adults and students must mask indoors at all times except when eating, regardless of vaccination status.
- Masking outdoors is optional at this time.
- Safe mask breaks will be offered as needed.
- Masks must be worn on buses at all times.



Physical Distancing

- Distancing of 3 feet to the greatest extent possible in classrooms
- Distancing of 6 feet to the greatest extent possible when students are unmasked (lunch, music)

Social distancing



in classrooms



Screen Testing

- Recommended by the MCDPH if a known cluster or outbreak in a school or community
- September 2 Commissioner's Determination
 - Testing requirements for teachers and staff
 - Offer screen testing weekly for students
- Protocols and supplies in place
- Continue to work with MCDPH



Ventilation

- Keep windows and doors open when possible
- Open or crack windows on buses when possible
- HVAC filters have been upgraded to MERV13 where available
- Architects confirmed HVAC systems are up to code and provide the proper number of air exchanges per NYSED
- Continue to work with architect for potential upgrades



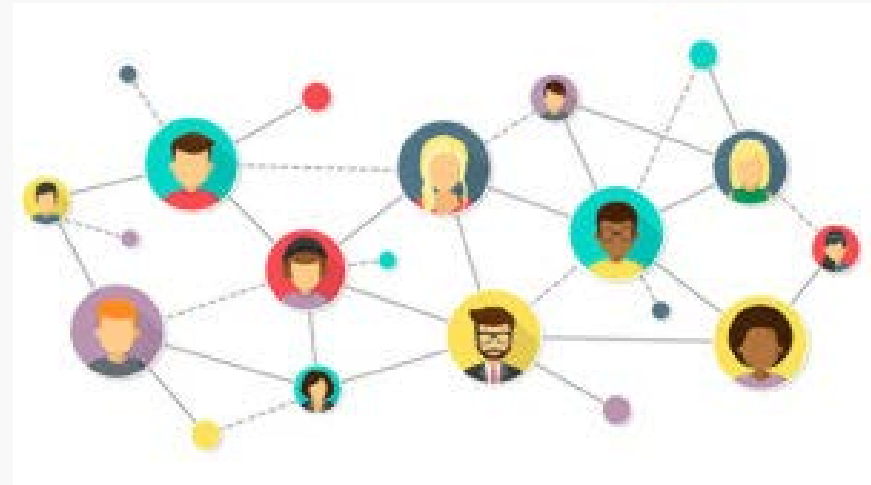
Handwashing and Respiratory Etiquette

- Continue to emphasize the importance of handwashing and respiratory etiquette
- Provide frequent opportunities for handwashing and sanitizing
- Signage and visual reminders present in all district buildings



Contact Tracing, Isolation, Quarantine

- Continue to partner with MCDPH
- Close contact definition
 - Within 6 feet, with at least one person unmasked for 15 consecutive minutes
- Return to school and work flowcharts
- Return to exercise flowchart



Individual with NO known exposure

Student, teacher or staff member with **NO** known exposure has a temperature $>100^{\circ}$ OR exhibits new or unusual symptoms of COVID-19:
Fever, chills • Shortness of breath • Sore throat • Loss of taste or smell • Headache • Loss of appetite • Cough • Nasal congestion • Nausea, vomiting or diarrhea • Fatigue • Muscle or body aches

REGARDLESS of vaccination status, individual must stay or return home.
Contact health care provider.

Alternate diagnosis

Individual can return to school with a note signed by their health care provider explaining the alternate diagnosis.

COVID-19 test result is negative:

Individuals can return to school if symptoms are improving and they are fever-free for 24 hours without fever reducing medication.

They must provide a copy of the negative test result or a note from their health care provider indicating the negative result.

COVID-19 test result is positive:

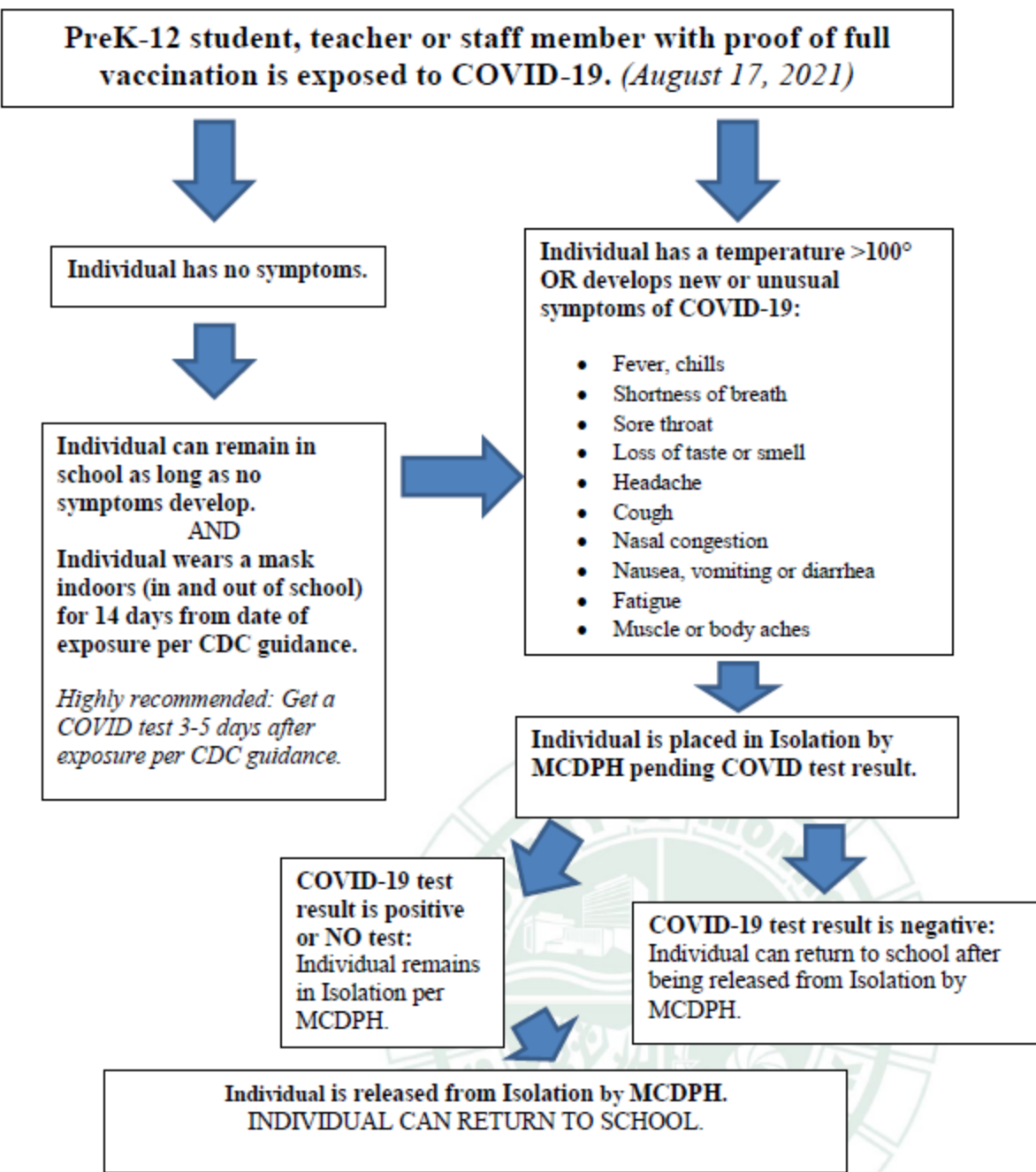
Individual is placed in isolation by MCDPH.

Individual can return to school after being released from Isolation by MCDPH.

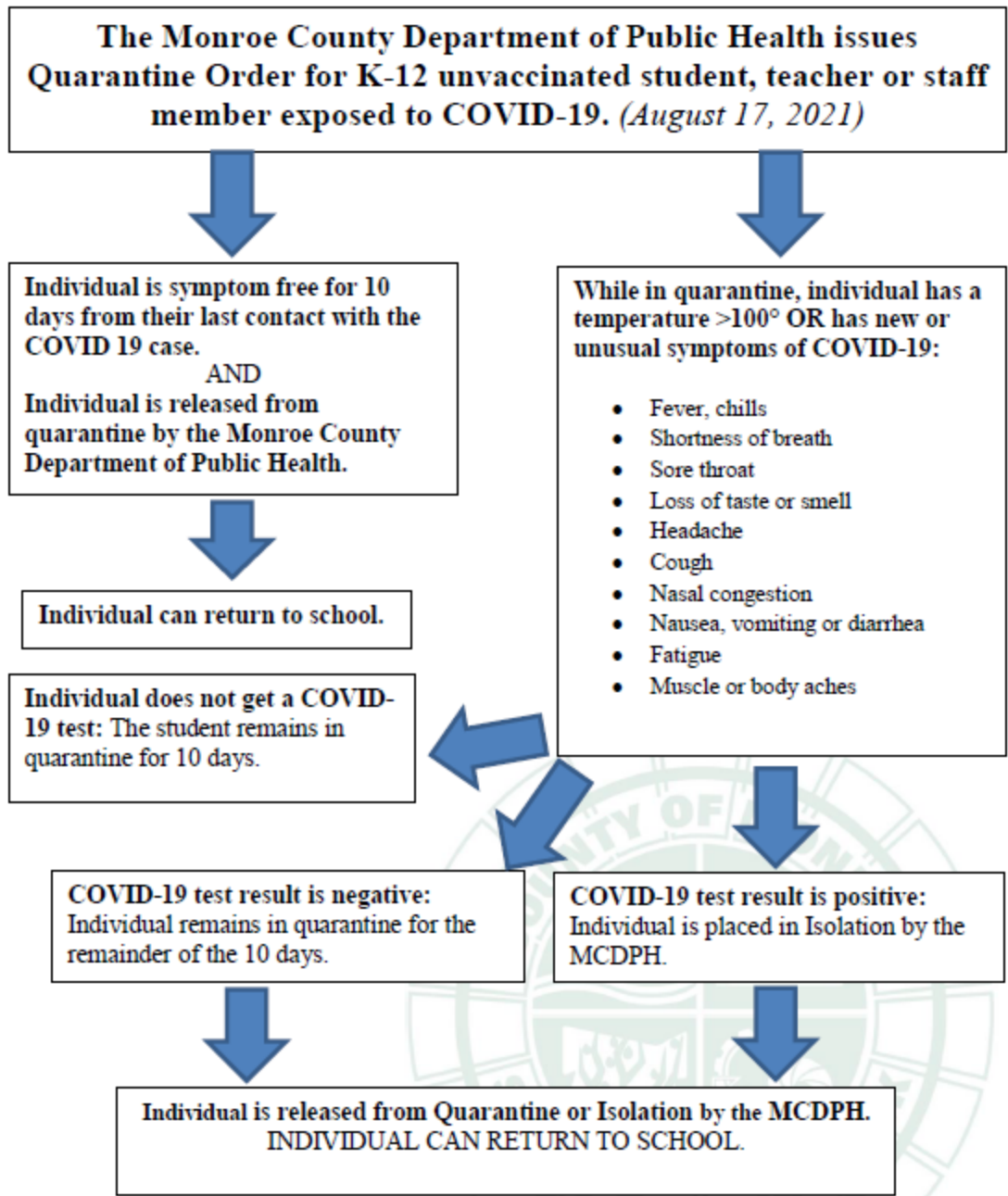
No test/No alternate diagnosis:

Individual may return to school after at least 10 days have passed since date of first symptoms
AND
Individual's symptoms are improving
AND
Individual is fever-free for at least 24 hours without the use of fever reducing medicines.

Vaccinated Close Contact



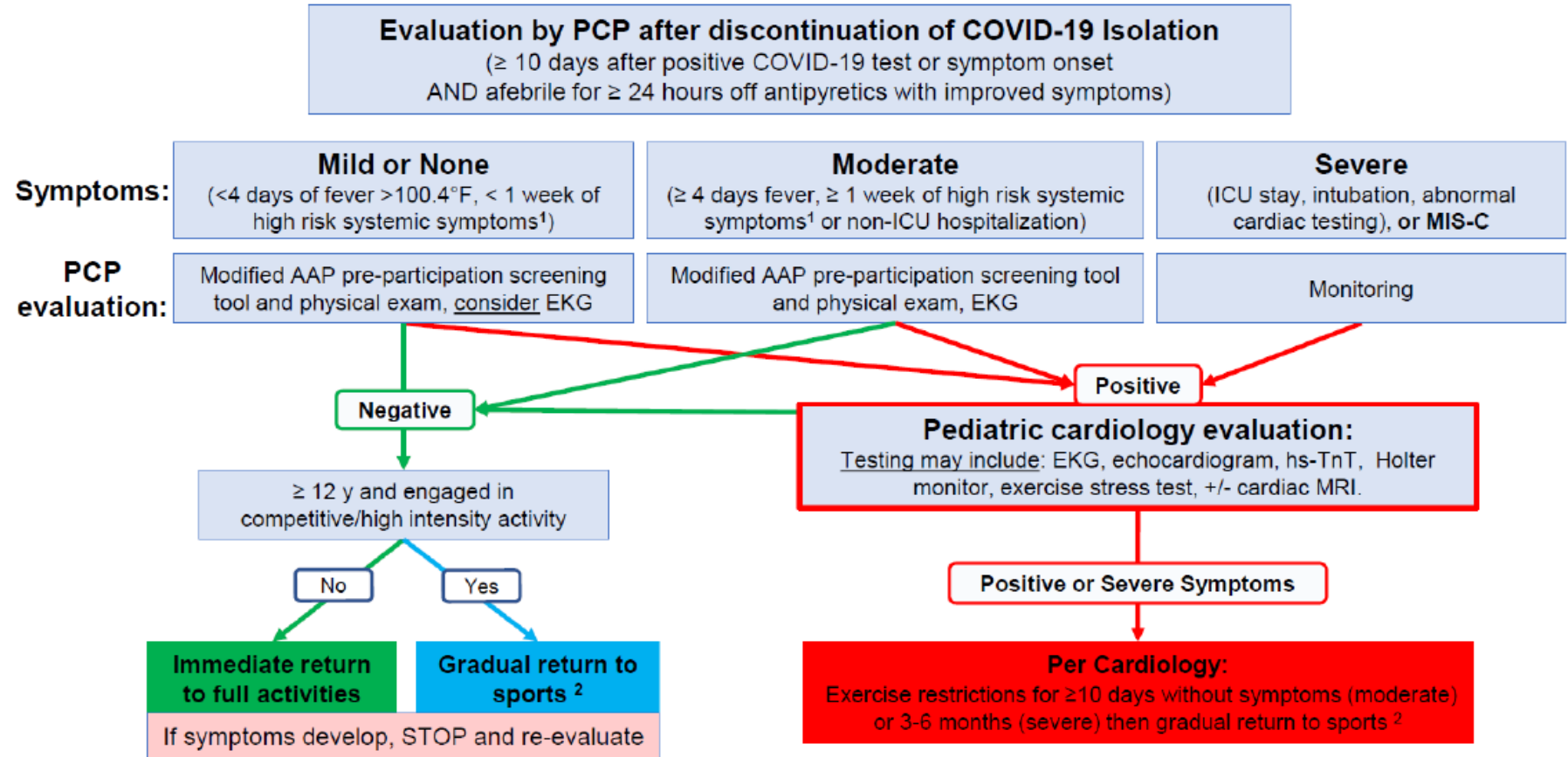
Unvaccinated Close Contact



Return to Exercise

Return to Exercise after COVID-19 Infection in Pediatric Patients (K-12)*

Note, patients with close contact exposure to COVID-19 are restricted from participation for ≥ 10 days (same duration as quarantine).



Published by Finger Lakes/Western NY COVID Pediatric RTP Workgroup on 3/8/2021. This document contains guidance based on current information available to inform assessment and risk stratification for release to participation in physical education, sports and moderate to vigorous play for pediatric patients and is modified from interim guidelines from the American Academy of Pediatrics <https://services.aap.org/en/pages/2019-novel-coronavirus-covid-19-infections/clinical-guidance/covid-19-interim-guidance-return-to-sports/> and the American College of Cardiology <https://www.acc.org/latest-in-cardiology/articles/2020/07/13/13/37/returning-to-play-after-coronavirus-infection>

¹ High risk systemic symptoms are: fever > 100.4 , myalgia, chills, or profound lethargy. Non-systemic symptoms (loss of taste or smell or respiratory symptoms) do not qualify.

² Once cleared, gradual return to sports can begin 10 days after resolution of high risk symptoms without antipyretics. An AAP-suggested protocol is on the attached page.

Legal Notice and Disclaimer: Please note that the information contained in these resources does not establish a standard of care, nor does it constitute legal or medical advice. These guidelines reflect the best available data at the time the information was prepared. The results of future studies may require revisions to the information in this guideline to reflect new data. This information is not intended to replace individual provider clinical judgment in the care of their patients. Neither this workgroup, or any contributor to this effort, makes any representations or warranties, express or implied, with respect to the information provided herein or to its use.

Cleaning and Disinfecting

- Continue regular cleaning procedures
- Additional cleaning protocols in spaces where adults and students are eating will be in place
- Hand-washing will be emphasized and sanitizing stations are available



Questions?

