

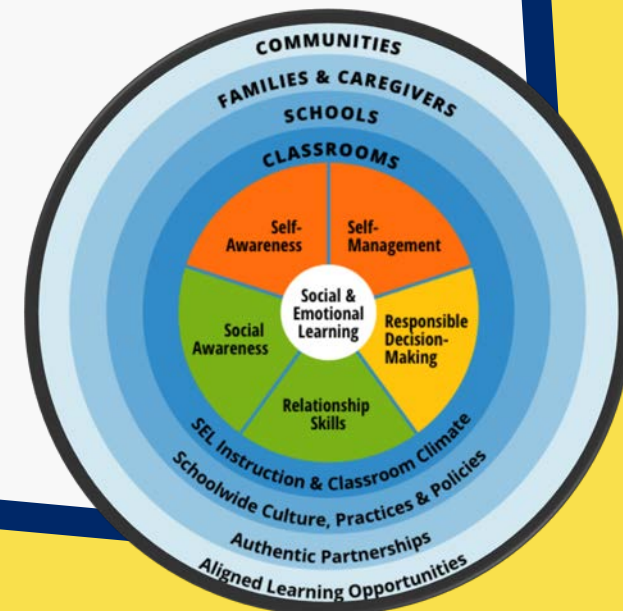
Social-Emotional Learning and Mental Health

04.12.2022



District-Wide Professional Learning

- SEL 3 Signature Practices Playbook
- Book Study: *Better Than Carrots or Sticks: Restorative Practices for Positive Classroom Management*
- Book Study: *Classroom Reading to Engage the Heart and the Head*
- Zones of Regulation
- Emotional Regulation - Teacher Aides & Assistants
- New Teacher Seminar Series #8: A Healthy Classroom



CRE / SEL Faculty Meetings

- CRE / SEL #1: 10/19 & 10/21
- CRE / SEL #2: 12/7 & 12/9
- CRE / SEL #3: 2/15 & 2/17

Learning Targets:

- I can identify the connection between CRE and SEL.
- I can create a draft of an activity that supports a welcoming and affirming environment and is aligned to a SEL Competency.



Community Building / Restorative Circles

- **Spring 2021:** Trained Cosgrove Middle School Staff
- **2020-2021:** District Office Administrators Trained by Partners in Restorative Initiatives (PiRI)
- **Summer 2021:** Administrators Trained at Admin. Retreat
- **Fall 2021:** Teachers Trained During Faculty Meetings
- **Fall 2021:** Cosgrove Middle School Implements Community Building Circles
- **Ongoing:** Modeled in Meetings Across the District



Community Building Circles

- Winter 2021: Admins. & Related Service Providers Trained by Jeanne Carlivati & Mary Reed

Cohort 1	Cohort 2	Cohort 3
1/19/22 and 1/21/22	2/9/22 and 2/10/22	2/14/22 and 2/16/22
Kristin Swann	David Caiazza	Telcie Pincelli
Mike Canny	Denise Lemcke	Sean McCabe
Amy Sullivan	Natalie Kirisits	Erin Shaw
Brett Shufelt	Jessica Silsby	Christie Balys
Deanna Romanowski	Rick Platt	Joe Simmons
Tabitha Messner	Jeanne Pacitto	Kaitlyn Shamp
Kim Patton	JoAnn Krywy	Jocelyn Paolozzi
Heidi Morgan	Amy Gillett	Elizabeth Wade
Tom Burger	Kate Zobkiw	Erin Hassall
Becky DiNatale	Tina Brien	Caroline Bodensteiner

Genesee Mental Health

- Rochester Regional Health and Genesee Mental Health Center
- Satellite locations for outpatient mental health services
- Therapist located in school to conduct confidential treatment sessions

- Schedule
 - Munn- Monday
 - Cosgrove- Wednesday
 - High School- Thursday

The logo for Rochester Regional Health is displayed in a white rectangular box with a thin grey border. The word "ROCHESTER" is in large, bold, black capital letters. Below it, the words "REGIONAL HEALTH" are in smaller, bold, black capital letters, with "HEALTH" highlighted in blue.

ROCHESTER
REGIONAL HEALTH

Genesee Mental Health

- Opportunity to connect with mental health support and access to consistent counseling
- Referral made by Spencerport staff and intake coordinated by GHM
- Therapist consult and collaborate with Spencerport staff
- Caseload
 - Munn- 11
 - Cosgrove- 19
 - High School- 22

ROCHESTER
REGIONAL HEALTH

Genesee Mental Health

Testimonials

“I have connected with my therapist and he has helped with dealing with my anxiety and depression, and my relationships.”

“Matt has been willing to meet my son at the district learning center and help him transition back to his school classes. They have come up with plans to deal with stress at school and home.”

“I just started working with my therapist last month, but I can already see an improvement in my anxiety and relationships.”

“I like to meet with Matt to just talk things out about my family and friends. He’s been a big support in helping me understand and make better decisions.”

Therapy Dogs

- BOE Policy (8361)
 - Benefits include:
 - Reduced stress
 - Improved physical and emotional well-being
 - Decreased anxiety
 - Improved self-esteem
- Four therapy dogs throughout the district
 - Three at the high school
 - One at Munn



Thank You

Questions?

