



SPENCERPORT CENTRAL SCHOOL DISTRICT

Student Safety and Support Services

March 14, 2023



District Safety Committee

Danielle Adam
Christina Bowerman
Julie Churnetski
Becky Daniels
David Gibbardo
Travis Gray
Jennifer Lapinski
Michael Marra

Christopher Mears
Thomas Meier
Timothy O'Connor
Jonathan Saltzberg
Michael Sorbera
Amy Sullivan
Kristin Swann
Sheena Wheeler
Rick Wood



Student Safety & Discipline Subcommittee

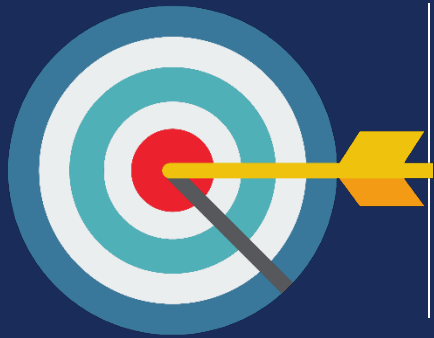
Danielle Adam
Erin Hassall
JoAnn Krywy
Jen Lapinski
Chris Mears

Tim O'Connor
Traci Powlowski
Mike Sorbera
Amy Sullivan
Kristin Swann
Amanda Van Huben

Student Behavior



Why are we still struggling with student behavior?

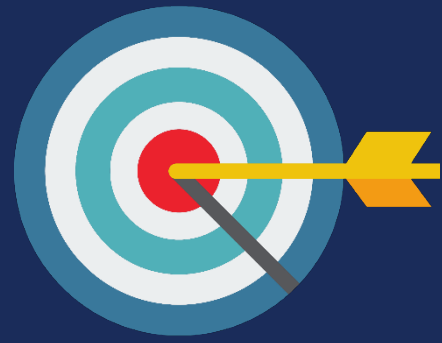


What does research show will help to reduce disruptive behavior?



How will we achieve those objectives in our schools?





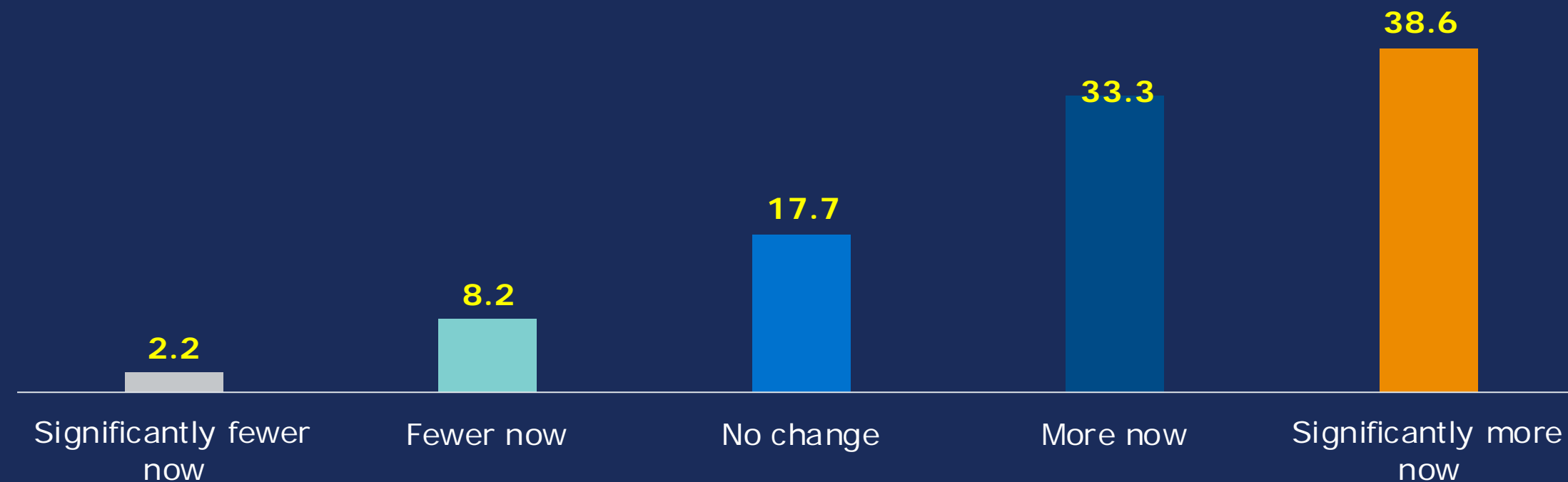
Why are we still struggling with student behavior?

Teachers Were Reporting an Alarming Increase in Disruptive Events

In 2018 Survey, Most Teachers Said Disruptive Behavior on the Rise

% of Teachers Responses Indicating Trends in Behavioral Disruptions over the Last Three Years

n=876



Behavioral Disruptions Taking a Significant Toll on Instructional Time

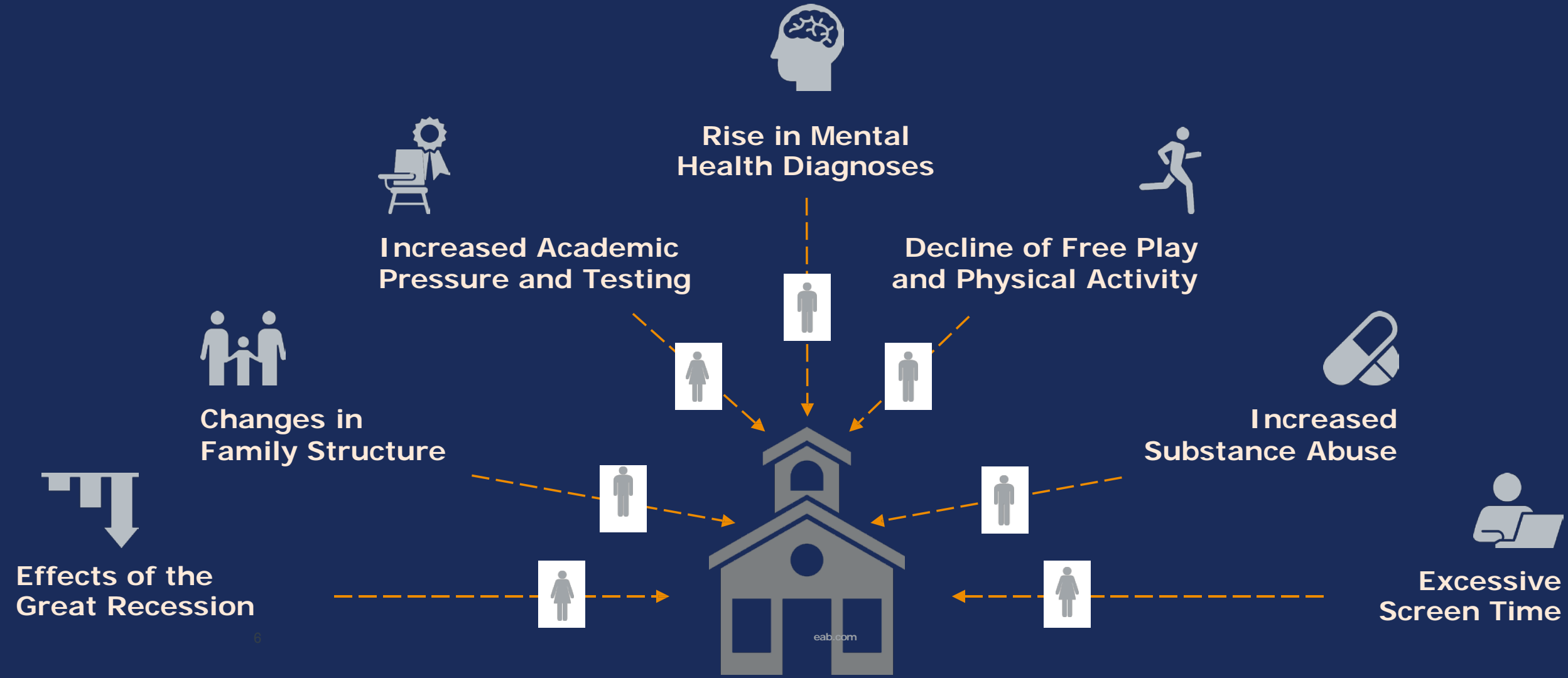
Average Instructional Time per Week Lost to Behavioral Disruptions

DLF Survey, Teacher-Reported, 2018 n=942



2:24 hr.

Societal Trends at the School Gates

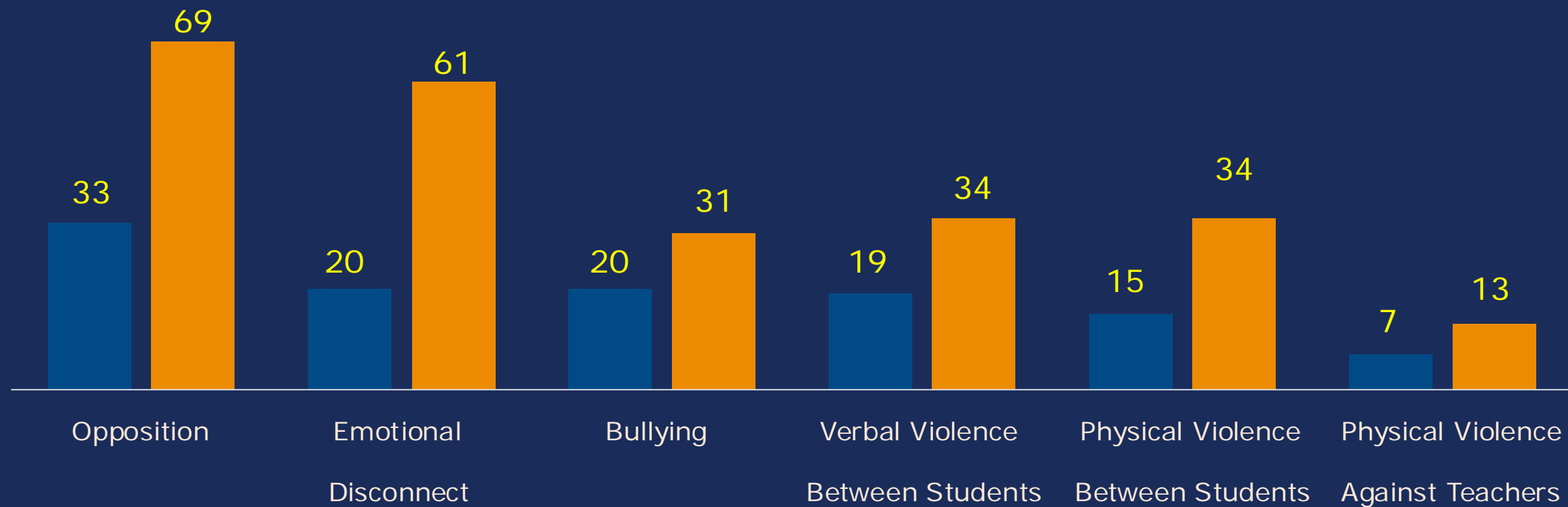


2010's Brought New Challenges for Students and Families

Perceptions of Concerning Behavior Up Sharply Across the Board

2022 Survey Finds Observed Increases in Every Type of Disruptive Behavior Since 2019

Percentage of Educators Who "Frequently Observe" the Following Behaviors, 2018-19 vs 2021-22 (n=1,109)



"The problems we are seeing now are amplified versions of the problems we were seeing before...Behaviors that already existed are still here but magnified."

Superintendent, NY School District

A Downward Spiral of Behavior and Morale

Student Behavior is Wearing Down Teacher Morale

2022 surveys show:

69%

Observed frequent opposition towards adult from students

40%

Feel less safe in their schools now than they did five years ago



Low Morale Makes Managing Behavior Harder

“

The increase in student behavioral concerns teachers are seeing **wears on their ability to respond productively to those students.** I am getting more instances of previously patient teachers now blowing up on students. And I get it—when we get burnt out, we are more likely to lash out.”

Superintendent
Southwestern School District

70%

Downward Spiral Has High Cost for Learning of relevant studies concluded that **teachers with the lowest morale also had the lowest academic student outcomes** across core subjects.

70%

of superintendents say that disruptive behavior is one of their top concerns in 2023



What does research show will help to reduce disruptive behavior?

First Steps On Reducing Disruptive Behavior



Strong Student - Adult Relationships

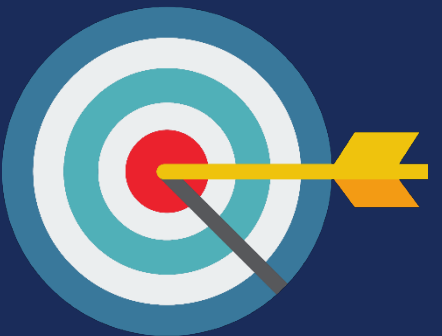
- MTSS Processes
- Partnerships and Initiatives
- SEL and Mental Health Supports

Safe Physical Spaces for Optimal Self- Regulation

- Security Department
- Physical Changes - facilities
- Technology Integration –
Cell Phone Study, Hall Pass Study,
Additional Support

Family Engagement for Consistent Expectations

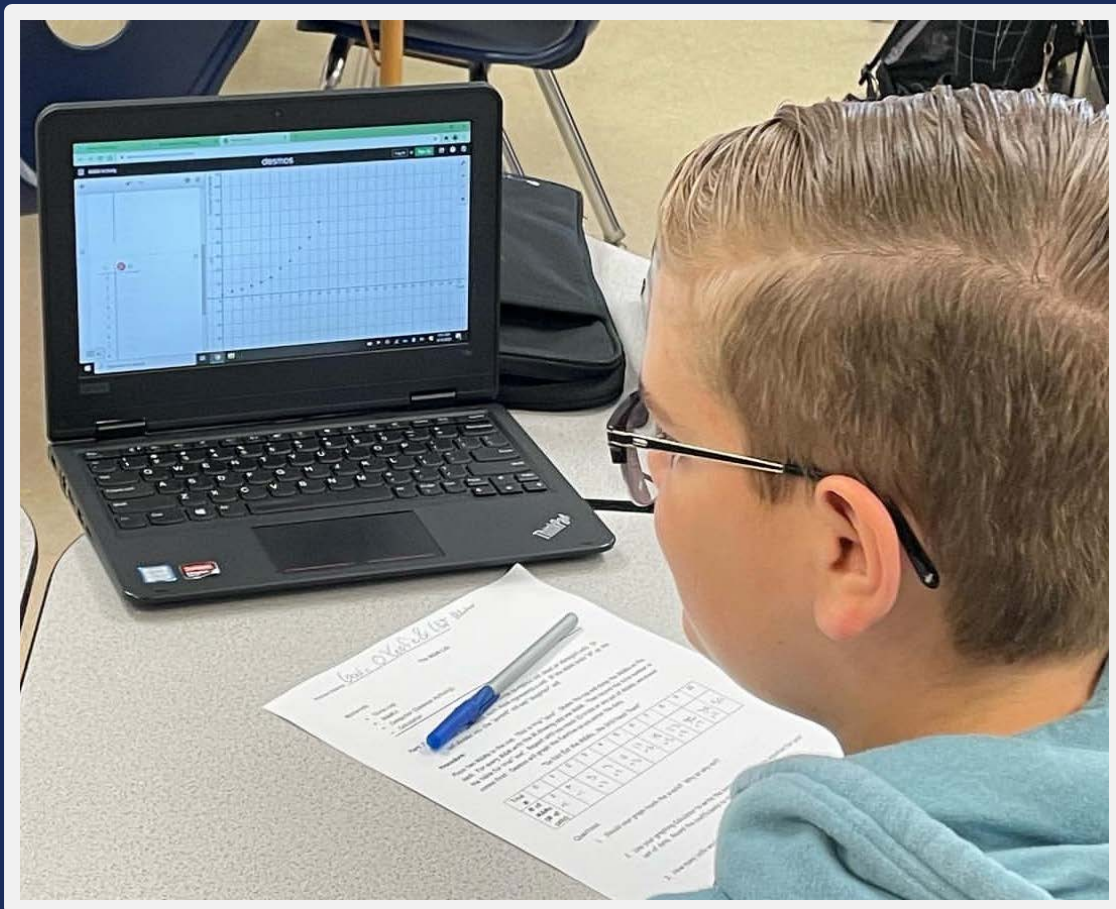
- Community Schools Model



How will we achieve **Strong Student** – **Adult Relationships** in our schools?

The collage features several key educational frameworks:

- MTSS**: Multi-Tiered System of Supports, represented by a large umbrella.
- RTI & SST**: Response to Intervention and Student Support Team, shown as a pyramid.
- PBIS**: Positive Behavior Intervention and Support, shown as a logo with the letters P, B, I, S.
- SEL**: Social Emotional Learning, shown as a circular wheel with segments for self-awareness, self-management, social awareness, and relationship skills.
- Mental Health**: Represented by a silhouette of a head with a heart and a pulse line.



Positive Relationships in Our Schools



trust. healing. justice.™



**Child Safety
Matters™**

powered by
Monique Burr Foundation for Children

**STUDENT
LEADERSHIP
SUMMIT**

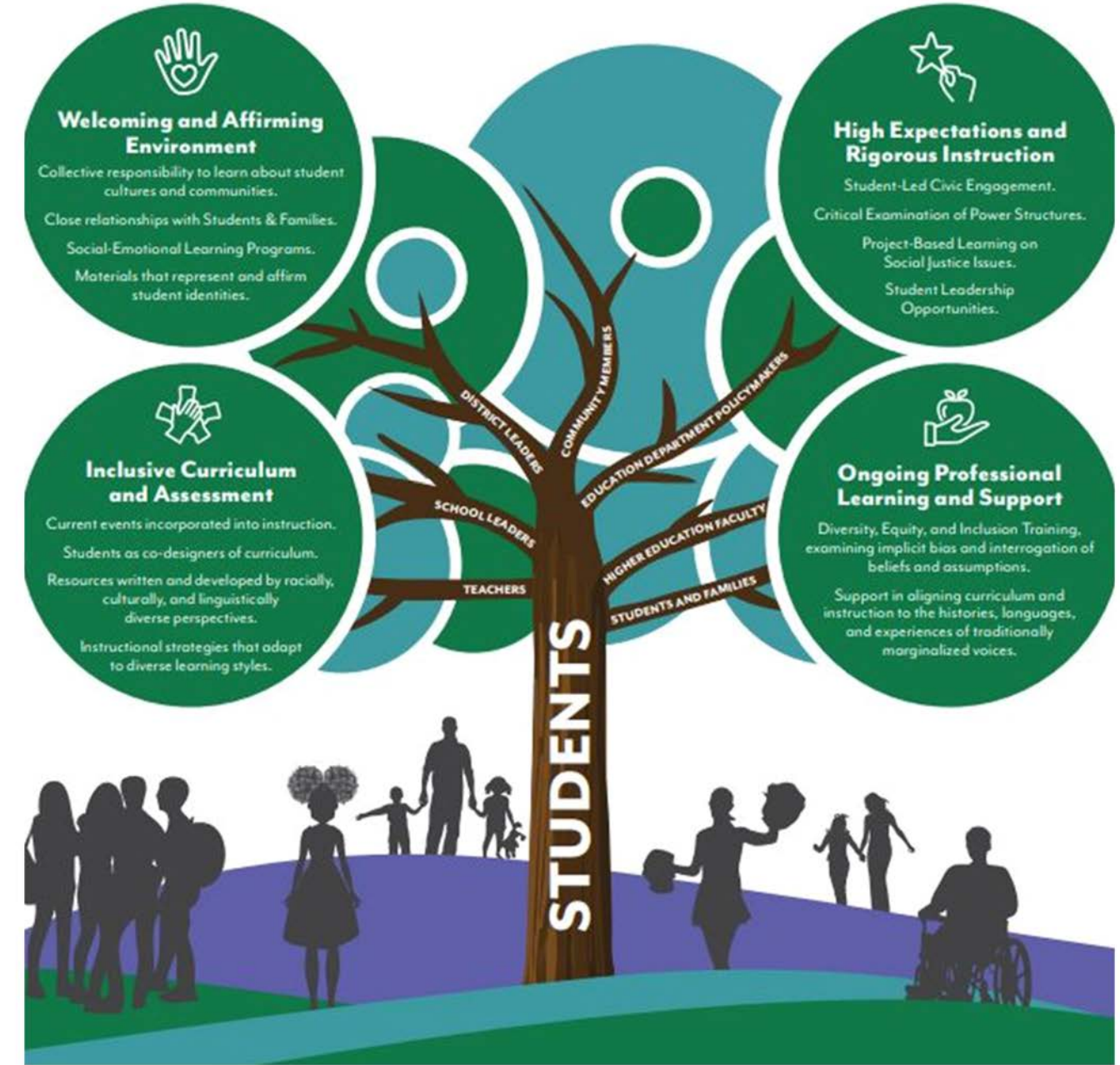


D.A.R.E.

**TO RESIST DRUGS
AND VIOLENCE**



The CR-S framework helps educators create student-centered learning environments that: affirm racial, linguistic and cultural identities; prepare students for rigor and independent learning; develop students' abilities to connect across lines of difference; elevate historically marginalized voices; and empower students as agents of social change.



Positive Relationships in Our Schools

Spencerport

Mental Health Staff

SOURCES OF STRENGTH

MONDAY	TUESDAY	WEDNESDAY	THURSDAY	FRIDAY
Community or Restorative Circle 	 Teacher-Led Mini Lesson with CASEL focus	Community or Restorative Circle 	 Teacher-Led Mini Lesson with CASEL focus	PBIS Focus Community Circle 








Ruby
Official Therapy Dog
Spencerport High School



The ZONES of Regulation™ Reproducible E The Zones of Regulation Visual

The ZONES of Regulation™

			
BLUE ZONE Sad Sick Tired Bored Moving Slowly	GREEN ZONE Happy Calm Feeling Okay Focused Relaxed	YELLOW ZONE Frustrated Worried Silly/Wiggly Excited Loss of Some Control	RED ZONE Mad/Angry Terrified Elated/Ecstatic Devastated Out of Control

© 2011 Think Social Publishing, Inc. All rights reserved.
From The Zones of Regulation™ by Leah M. Kuypers • Available at www.socialthinking.com





How will we create **Safe Physical Spaces for Optimal Self-Regulation** in our schools?



Factors Affecting Campus Safety

Security

**Facilities
& Design**

**School
Climate**

Security

Staffing, Protocols & Policies

High School currently has 5 full-time guards, with 1 guard assigned until 5pm. This is an increase from 1.5 FTE last year.

Middle School currently has 1 full-time guard, with support from HS guard staff at arrival and dismissal. This is an increase from 0.5 FTE last year.

Our new **Security Office** has 1 guard monitoring cameras district-wide. This is a new position.

District Patrol: One guard patrols from 6am-10am for arrival traffic in a marked security vehicle. One guard patrols district-wide 1pm-9pm. Both positions existed last year.



Facilities & Design

Access Control, Surveillance, Door & Hardware

Doors & Windows

- Monthly Door & Window safety checks district-wide

Cameras

- 40+ cameras installed at the High School last spring
- 7 new cameras to be added to District Office Spring '23 with special attention to lower level and entrances
- 40+ new cameras to be added to the Middle School Spring of 2023.
- 1 new 40MP with 24-70mm lens exterior camera to cover student parking at the High School. Installation slated for Spring of 2023

Door Alarms

- Door alarms will be added to two locations at the High School.
- Alarms connect to the Avigilon system so that both security & administration can be notified when a door is open.
- Installation slated for Spring 2023

Lights

- Over 50 exterior wall lights across the district are being replaced with brighter, long-lasting fixtures.



School Climate

Substance Abuse, Technology, Communication & Access

- New anonymous tip line
- See Something Say Something Initiative
- Vape Detectors installed at the HS summer of 2022
- After school student management is being addressed by staffing and student access limitations



On The Horizon

Short- and Long-term Initiatives Currently Underway



Staff



-
- Staffing levels are being evaluated for 23/24 school year, with a request for expansion at the Elementary, MS and districtwide levels

Safe Physical Spaces



-
- Cell phone usage policy revisions
 - E-Hall pass system
 - Bathroom controls/monitoring being addressed at the 6-12 level

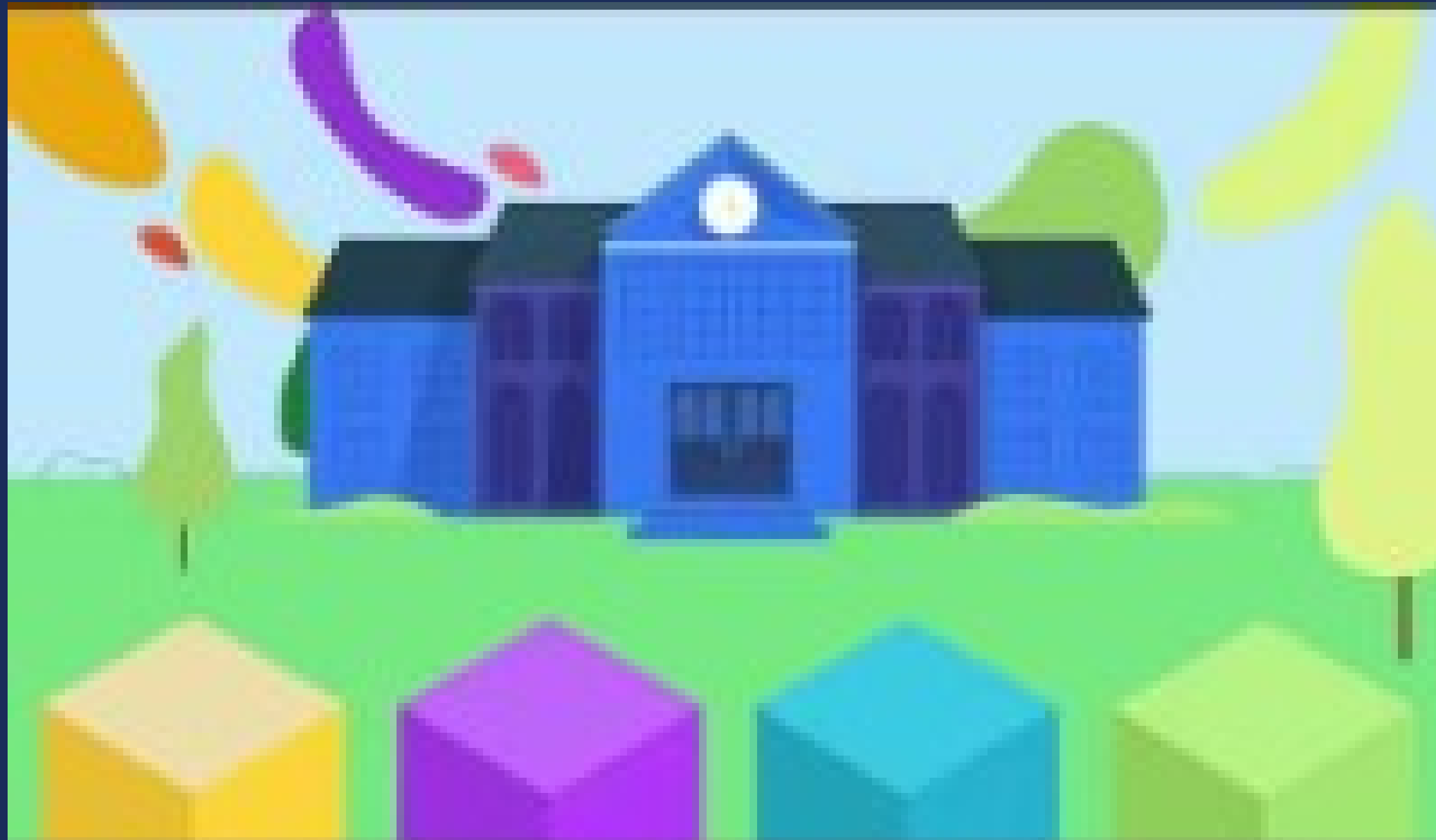
Facilities



-
- Alarms on all exterior doors at High School slated for installation with CIP 2022.
 - 12 Year Camera Replacement Plan
 - CIP 2022 vestibules at all schools and District Office



How can we improve **family engagement** for **consistent behavioral expectations** in our schools?



Continuing the Conversation

Subtitle



1 Budget Process

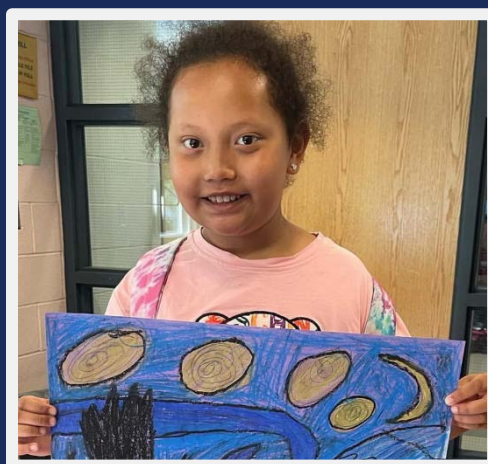
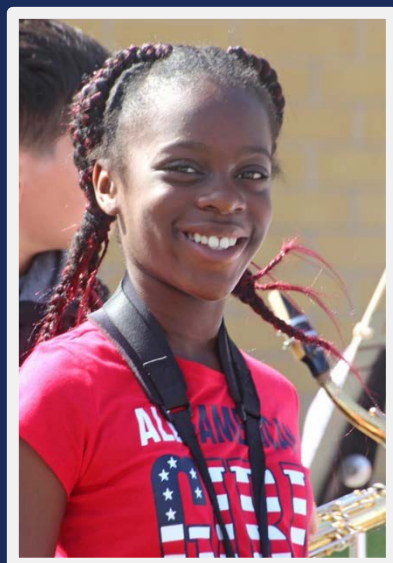
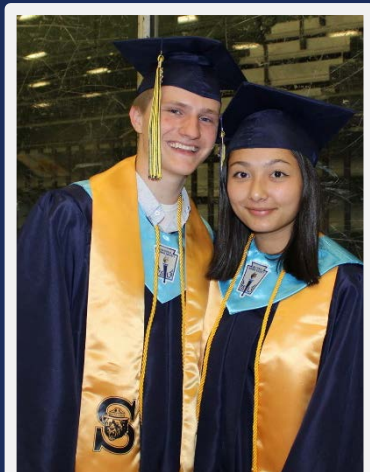
2 Strategic Plan

3 Support for Admin. & Teachers

Additional Resources & Supports

New research on:
Community Schools
& Reducing
Disruptive Behavior

Implement a proven system of support
Equip principals and teachers to lead implementation of best practices
Raise morale in schools



Thank you

